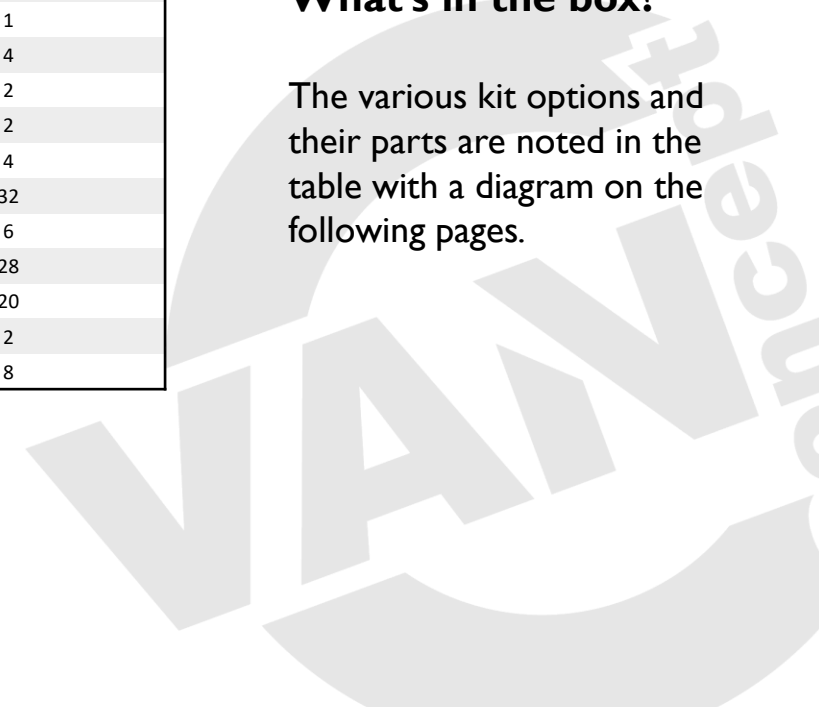


## CRUX-0050 VERTICAL STRUT KIT CRAFTER/SPRINTER & CRAFTER/MANTGE

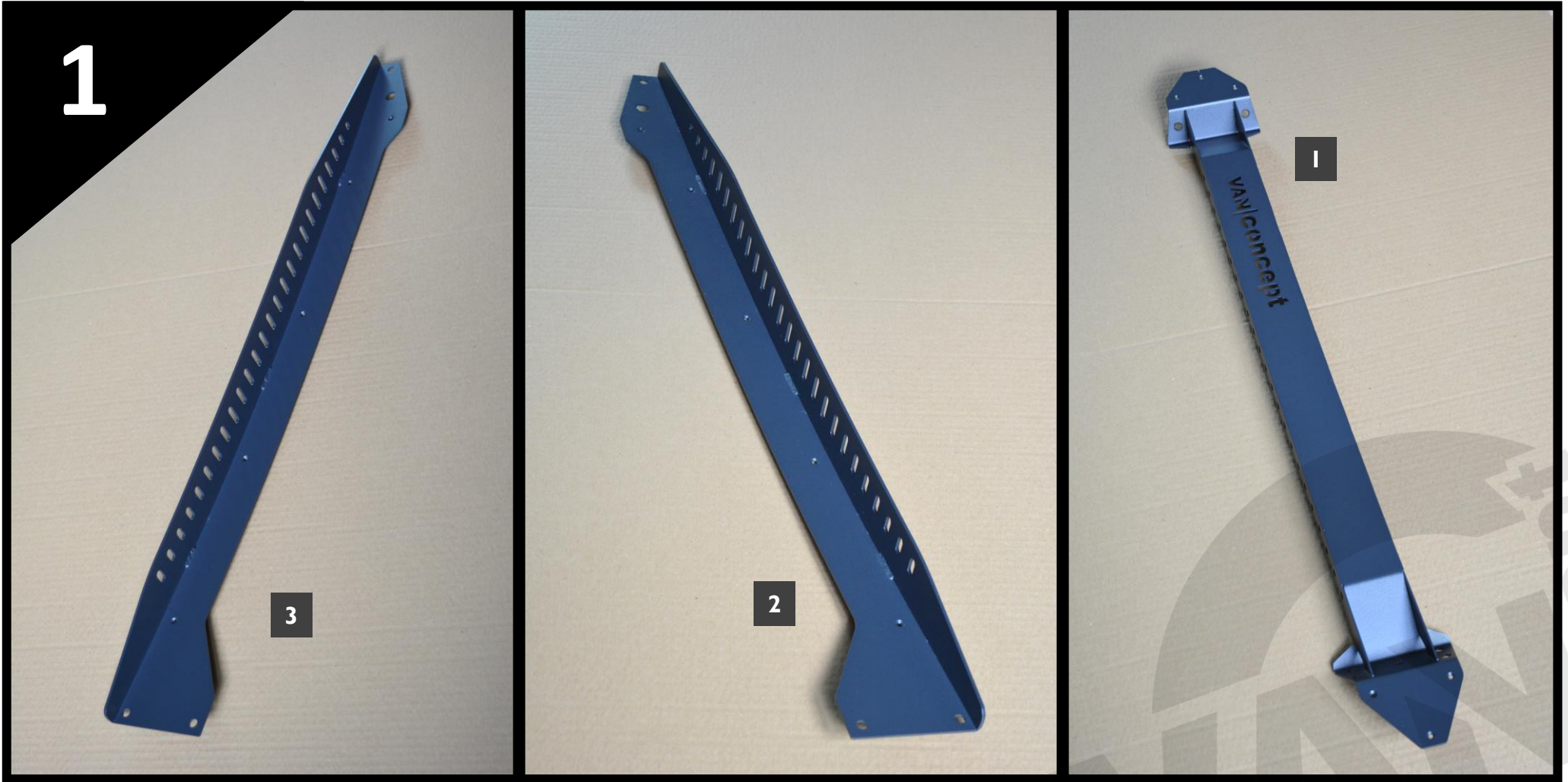
No.	Part No.	Description	Quantity
1	SMW-0132	Bed Strut Vertical Front	2
2	SMW-0134 LH	Bed Strut Vertical Rear LH	1
3	SMW-0134 RH	Bed Strut Vertical Rear RH	1
4	SMW-0136	Bed Mounting Bracket	2
5	SMW-0152 LH	Bed Frame Bracket Rear - Basic LH	1
6	SMW-0152 RH	Bed Frame Bracket Rear - Basic RH	1
7	SMW-0141	Bed Strut Rivnut Plate A	4
8	SMW-0142	Bed Strut Rivnut Plate B	2
9	M-0013	Spacer	2
10	Rivet	4 x 12mm	4
11	CSK Rivet	4 x 8mm	32
12	Self Tapping Pan Screw	4.2 x 13mm	6
13	Washer	M8	28
14	Button Head Bolt	M8 x 20mm	20
15	Button Head Bolt	M8 x 80mm	2
16	Nyloc Nut	M8	8

### What's in the box?

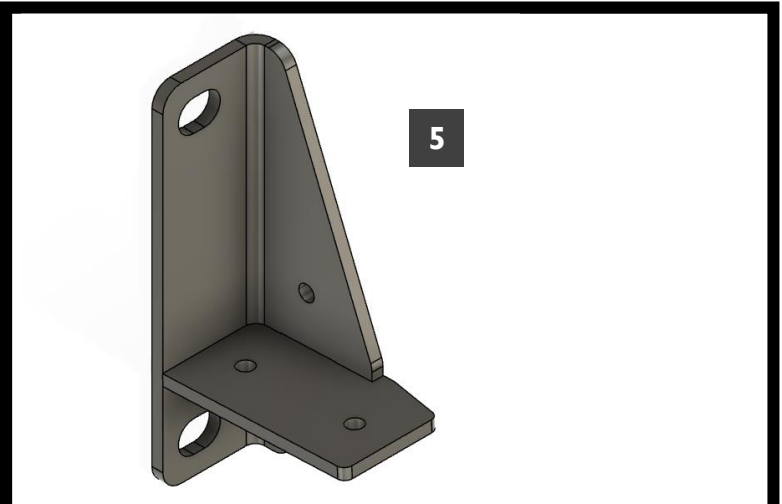
The various kit options and their parts are noted in the table with a diagram on the following pages.



# INSTRUCTIONS VERTICAL STRUT KIT



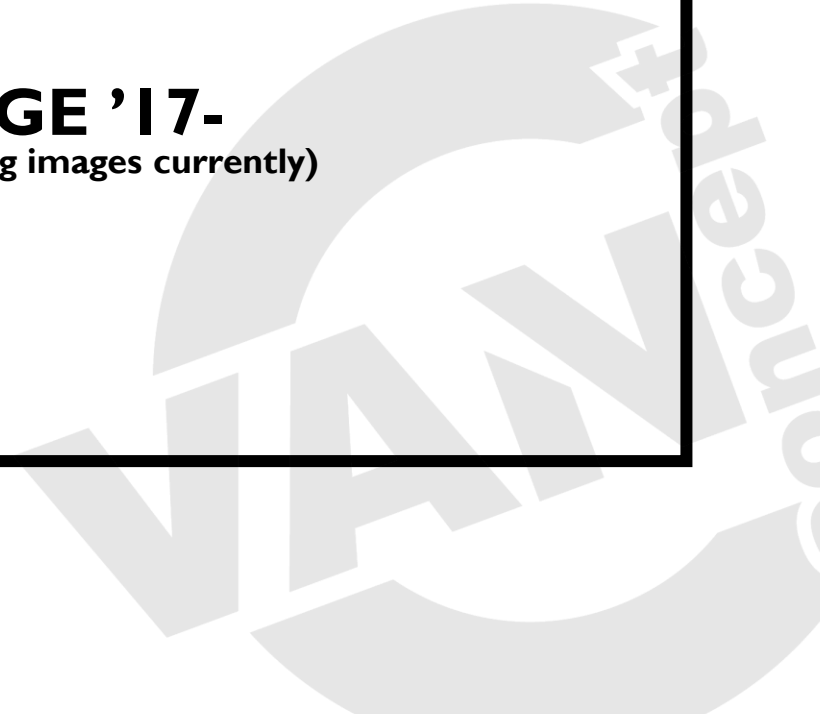
# INSTRUCTIONS VERTICAL STRUT KIT



**4**

**VW CRAFTER '06-'16 & MERCEDES SPRINTER '06-'17**  
use stages 5 - 12

**VW CRAFTER '17- & MANTGE '17-**  
fits in the same way as for the above models (we have no fitting images currently)

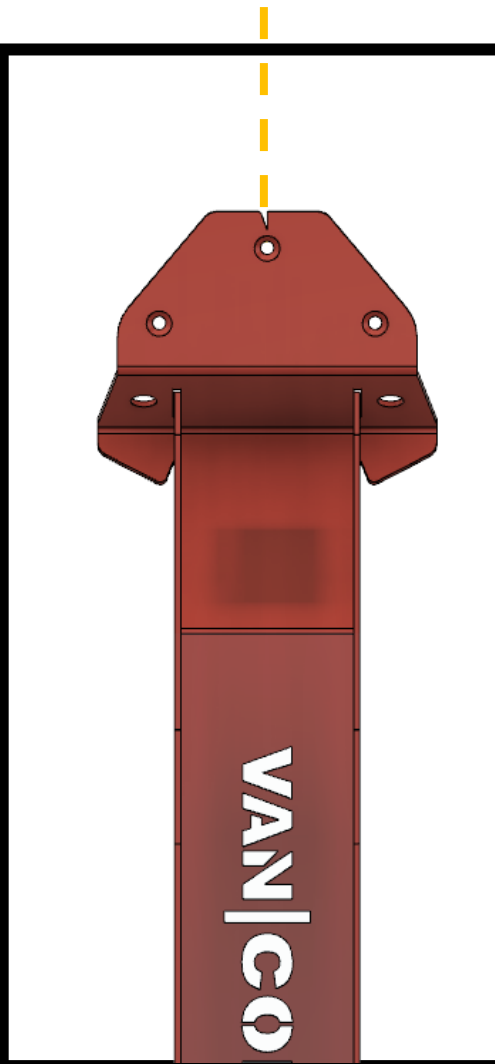
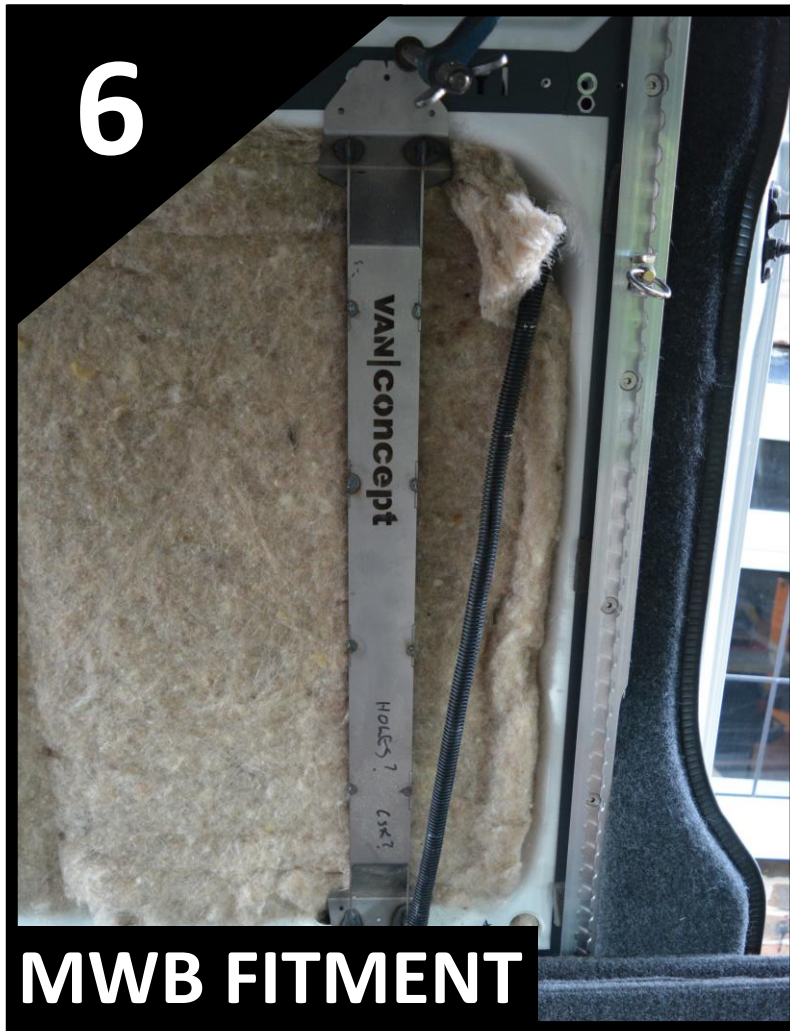


# INSTRUCTIONS VERTICAL STRUT KIT



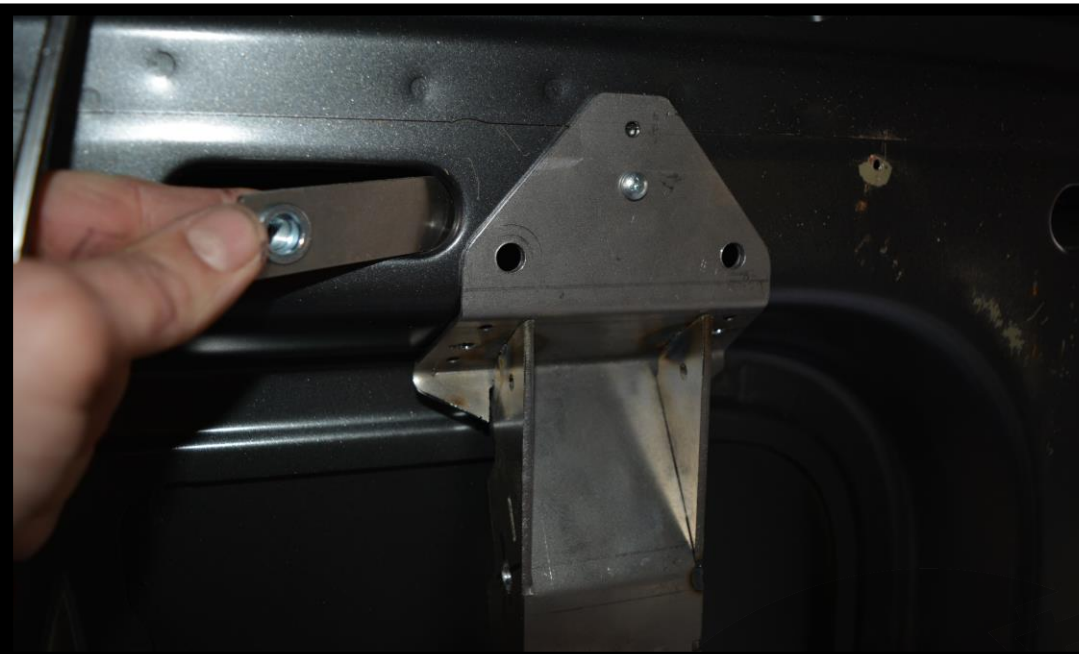
- For LWB vans, offer up 1x Bed Strut Vertical Front to the central recess (right hand side of van shown).
- Align the centre mark on the strut with the edge of the metalwork in the top section (this positioning is not important if using as a vertical strut kit) and temporarily fix the strut to the van using 2x 4.2 x 13mm self tapping screws through the rivet holes, one top and one bottom.
  - Use a square against the edge of the strut and align with the join in the upper metal panels to ensure a vertical fitment.

# INSTRUCTIONS VERTICAL STRUT KIT



- For MWB vans, offer up 1x Bed Strut Vertical Front to the rear recess (left hand side of van shown).
- Align the centre mark on the strut with the edge of the metalwork in the top section (this positioning is not important if using as a vertical strut kit) and temporarily fix the strut to the van using 2x 4.2 x 13mm self tapping screws through the rivet holes, one top and one bottom.
  - Use a square against the edge of the strut and align with the join in the upper metal panels to ensure a vertical fitment.

# INSTRUCTIONS VERTICAL STRUT KIT



- Mark the position of the three lower (two won't be useable due to the hole in the bodywork) and two upper mounting holes, on the angled surfaces, along with the four remaining rivet holes, before removing the strut and drilling 4x Ø4.2mm and 5x Ø8.5mm holes, to match those in the strut. De-burr the holes and we advise applying some anti-corrosion paint to the bare metal.
- Re-fit the strut. For the top mounts, use 2x M8 x 20mm button head bolts and 2x M8 washers and tighten into Rivnut Plate A on the back of the bodywork, by accessing through the slot and for the bottom mounts, use 3x M8 x 20mm button head bolts and 3x M8 washers and tighten into Rivnut Plate B on the back of the bodywork.
  - Remove the self tapping screws and fit 6x countersunk rivets to pull the strut to the bodywork on the vertical surfaces. Ensure all three bolts are securely tightened.

# INSTRUCTIONS VERTICAL STRUT KIT



- Take the Bed Strut Vertical Rear RH and offer up to the rear corner of the van, aligning the hexagonal hole with the hole in the bodywork.
- Use a square against the short edge of the strut (see middle image) and align with the join in the upper metal panels to ensure a vertical fitment.
  - Temporarily fix the strut to the van using 1 x 4.2 x 13mm self tapping screw through the rivet hole at the top.



# INSTRUCTIONS VERTICAL STRUT KIT



- The rear strut is correctly aligned when the bottom edge is parallel with the bodywork.
- Mark the position of the two lower and one upper mounting holes, along with the four remaining rivet holes, before removing the strut and drilling 4x  $\text{Ø}4.2\text{mm}$  and 3x  $\text{Ø}8.5\text{mm}$  holes, to match those in the strut. *De-burr the holes and we advise applying some anti-corrosion paint to the bare metal.*
- Re-fit the strut, using 2x M8 x 20mm button head bolts and 2x M8 washers and tighten into Rivnut Plate A on the back of the bodywork, by accessing from underneath.

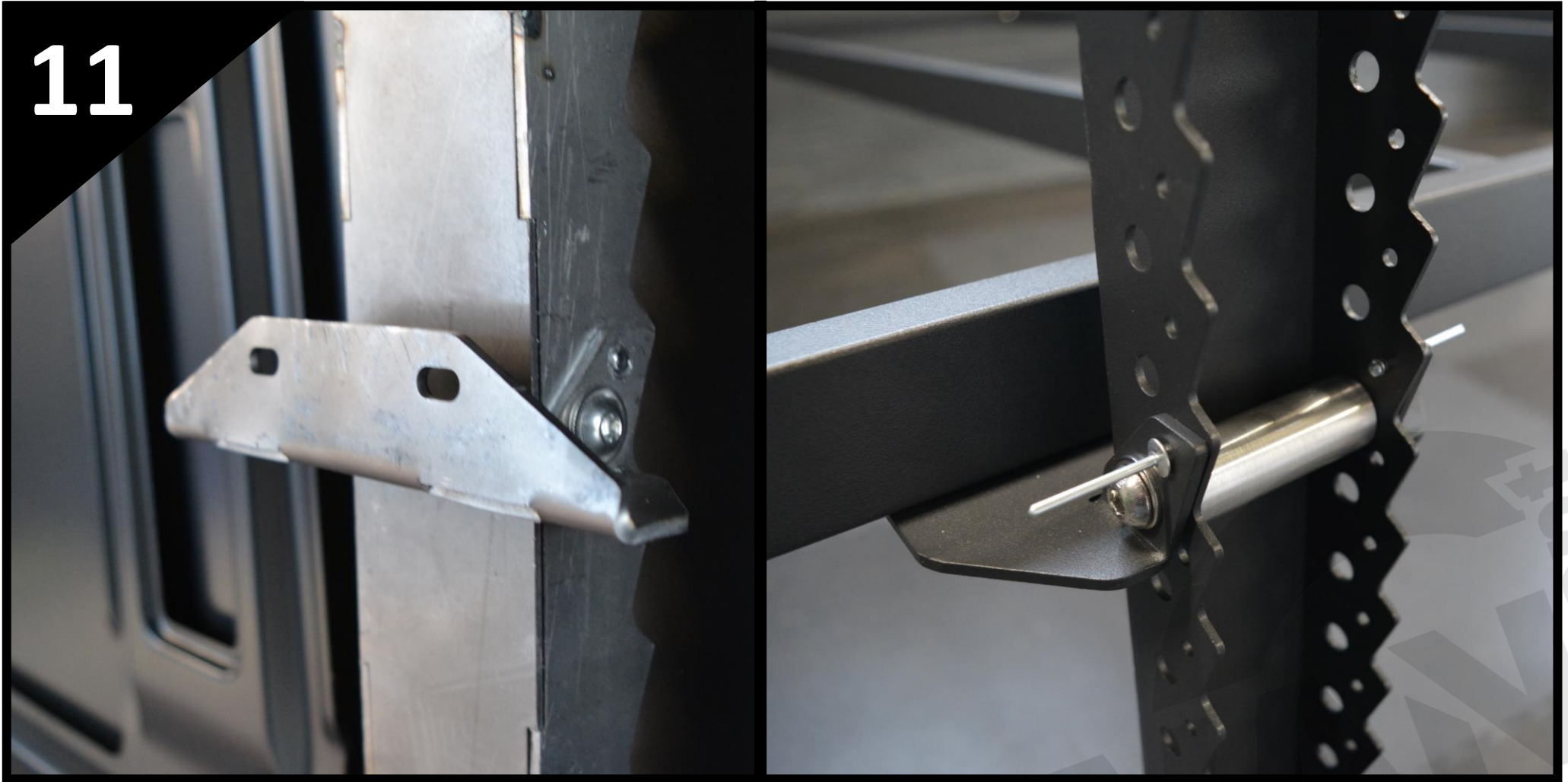
# INSTRUCTIONS VERTICAL STRUT KIT



- Fit 1x M8 x 20mm button head bolt with 1x M8 washer through the top mounting hole of the strut and bodywork, then fit 1x M8 washer and 1x M8 nyloc nut on the reverse.
- Remove the self tapping screw and fit 5x countersunk rivets to pull the strut to the bodywork.
  - *Ensure all three bolts are securely tightened.*

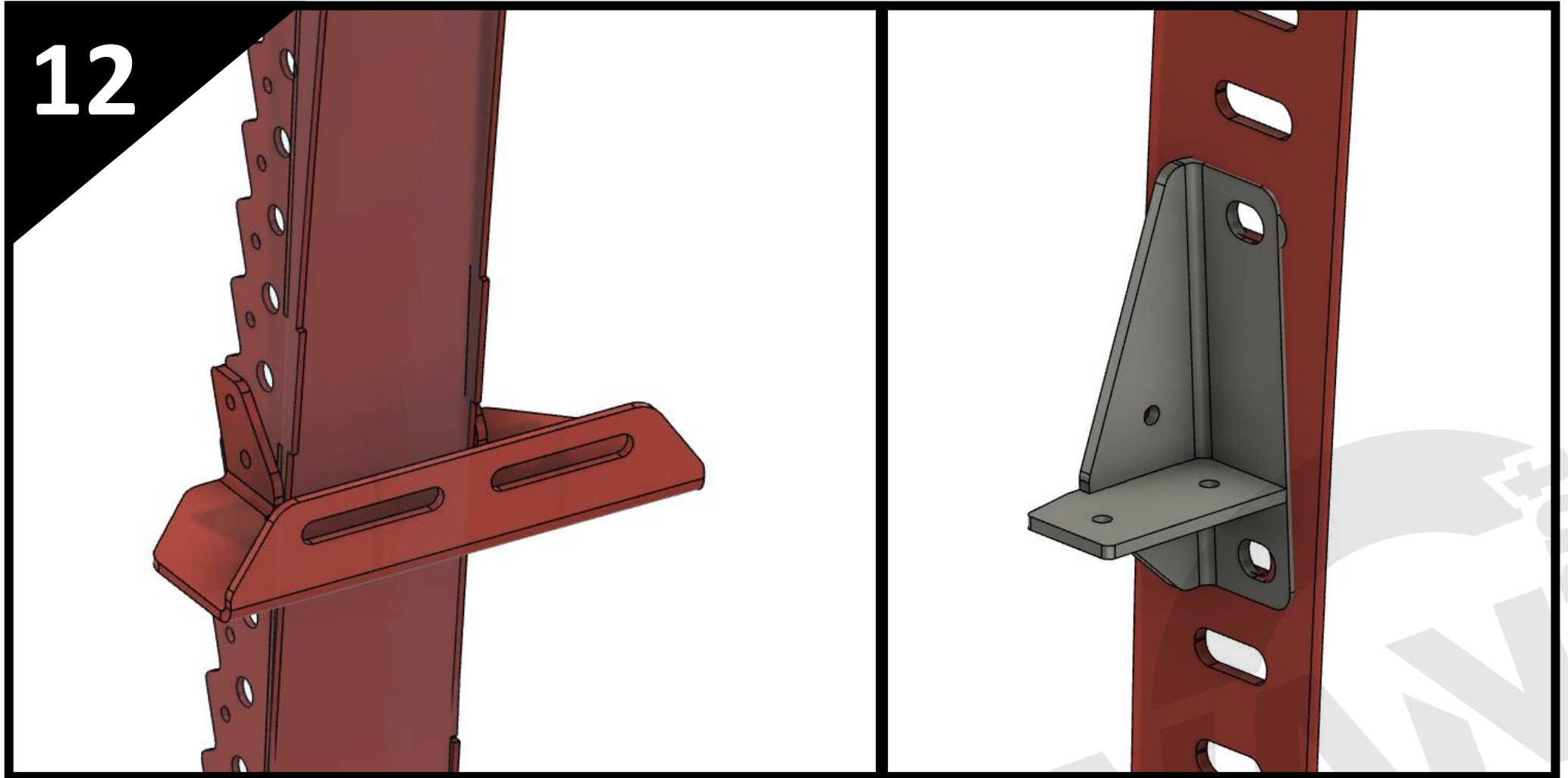
# INSTRUCTIONS VERTICAL STRUT KIT

11



- Repeat the previous steps to fit the struts to the other side of the van.
- Choose the height of the bed frame and fit the Bed Mounting Brackets to each front strut, using 1x M8 x 80mm button head bolt and 2x M8 washers, 1x M8 nyloc nut and the M-0013 metal spacer between the two sides as shown. Do this on both sides of the bracket before fitting 2x rivets in the aligned holes.
  - Tighten both nuts securely.
- *Now is the best time to fit the ply lining to the van, with just a small cutout required to fit around the Bed Mounting Bracket.*

# INSTRUCTIONS VERTICAL STRUT KIT



- Position the Bed Frame Bracket Rear on the rear vertical strut (left or right, easily identified by the angle on the rear bracket matching the angle of the rear strut) and fit 2x M8 x 20mm button head bolts and 2x M8 washers through the mounting holes at the rear of the Side Beam and into the slots on the rear strut.
- When securing your bed supports on the rear brackets, use the holes in the bracket to rivet or screw the bracket to the supports.