

## CRUX-0048

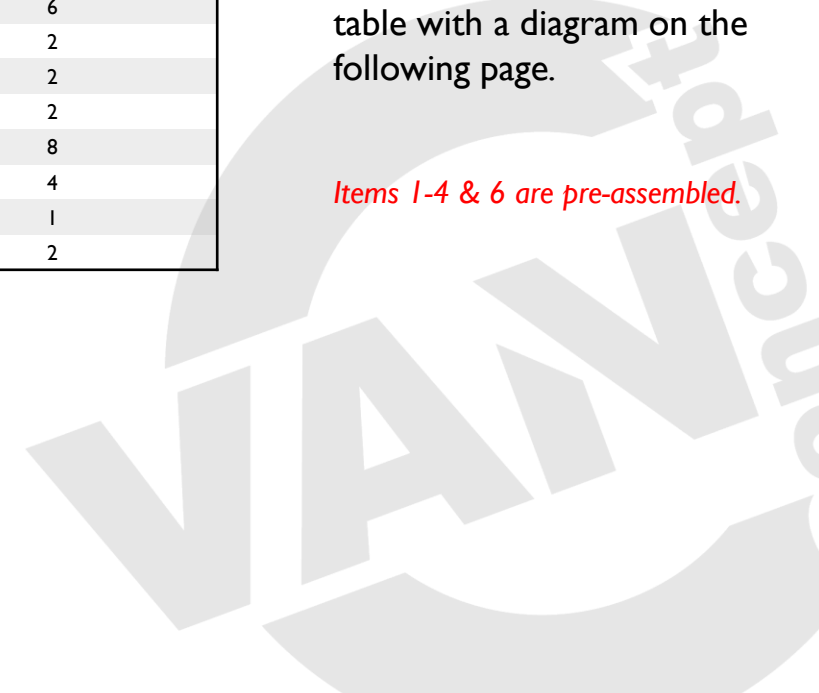
### VW CRAFTER '06-'17 & MERCEDES SPRINTER '06-'18

No.	Part No.	Description	Full Kit
1	A-0044	Double Swivel Seat Base Top – Welded	1
2	A-0045	Double Swivel Seat Base Bottom - Welded	1
3	M-0018	Double Swivel Glide Plate	1
4	SMW-0177	Double Swivel Stop Plate	1
5	8141-204	Hand Knob	6
6	Button Head Bolt	M6 x 6mm	2
7	Cap Socket Head Bolt	M10 x 20mm	2
8	Cap Socket Head Bolt	M10 x 90mm	2
9	Washer	M10	8
10	Nyloc Nut	M10	4
11	Split Convuluted Tubing	40mm	1
12	Rubber Stop	Rubber Stop	2

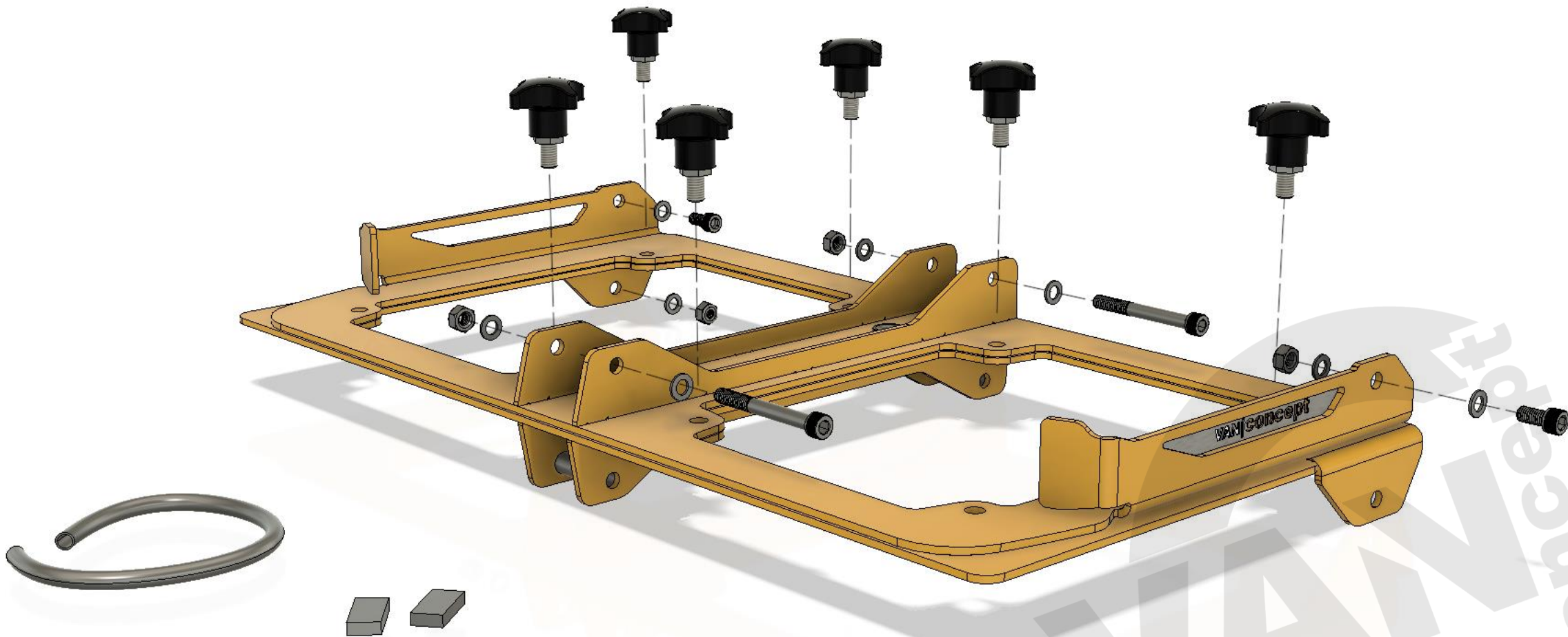
### What's in the box?

The various kit options and their parts are noted in the table with a diagram on the following page.

*Items 1-4 & 6 are pre-assembled.*



**INSTRUCTIONS**  
**DOUBLE SWIVEL SEAT BASE**





Seat Belt Anchorage Test Summary

A seat belt anchorage pull test was conducted to category M1 on the seat belt anchorages of the seat specified below, to the requirements of ECE Regulation 14.09 & EC Directive 76/115/EEC as Amended by 2005/41/EC Seat Belt Anchorage. The seat and seat belt anchorages met the load requirements of ECE Regulation 14.09 & EC Directive 76/115/EEC as Amended by 2005/41/EC Seat Belt Anchorage. The test was conducted at Vehicle Occupant Safety Centre's test facility as below.

Customer	Van Concept.
Model	Van Concept. Swivel Mechanism fitted to a Mercedes Sprinter 2018 Onwards Passenger Double Seat.
Test	ECE Regulation 14.09 & Directive 76/115/EEC as Amended by 2005/41/EC Seat Belt Anchorage Test.
Test Number	VO00409
Pull Type	M1
Leg Type	OEM Box Leg.
Floor Type	Fixed to a Steel Plate Structure.
Leg Span	n/a.
Seat Mass	58 kg.
Seat Belt Type	3 Point.

This report relates to the performance of the Van Concept. Swivel Mechanism fitted to a Mercedes Sprinter 2018 Onwards Passenger Double Seat as tested on a surrogate vehicle floor.  
No part of this report may be amended, modified or changed in any way, unless by Vehicle Occupant Safety Centre Limited. Unauthorised amendment will render this report invalid.  
Documents without signature and watermark are invalid.  
All component details supplied by Van Concept.

Date: 07<sup>th</sup> November 2022

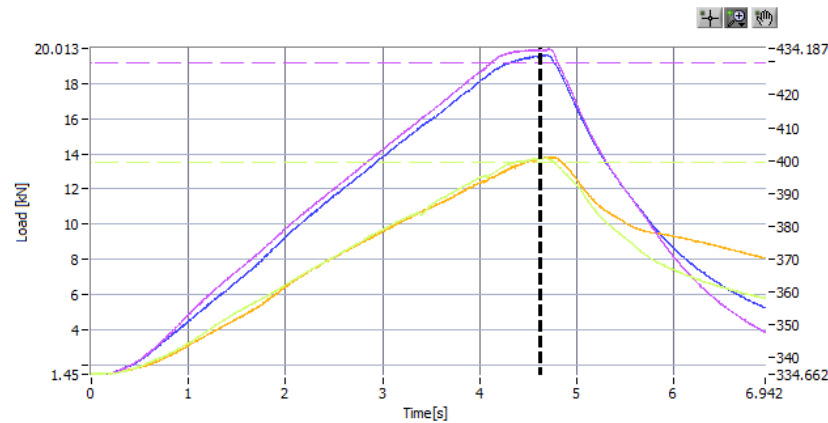
Russell Edmunds  
Engineering & Technical Director

01902 287030  
info@voscentre.com  
www.voscentre.com

Vehicle Occupant Safety Centre Limited  
The Science Centre, Wolverhampton Science Park, Gasfather Drive, Wolverhampton WV10 6RU  
Company Reg No. 11278111

PHDU

Test Title VO00409  
Description M1 Merc Sprinter PAssenger Double Seat 2018 Onwards & Swivel Mechanism  
Date 07/11/2022 09:39:24



Cursor Time (s) 4.624

Overlay Target Loads	Value	Target
Load 1	0.87	0.00
Load 2	0.14	0.00
Load 3	0.19	0.00
Load 4	-0.07	0.00
Load 5	13.73	13.50
Load 6	19.89	19.19
Load 7	13.73	13.50
Load 8	19.59	19.19
Load 9	0.01	0.00
Load 10	0.07	0.00
Pot 1 (200813234350)	532.42	0.00
Pot 2 (200813234351)	526.51	0.00
Pot 3 (200813234349)	75.03	0.00
Pot 4 (200813234354)	524.62	0.00
	521.66	0.00
	509.39	0.00

Dynamic displacement (mm)

Show dynamic displacement for

Pot 1

Pot 1


Angular displacement (degrees)

Show angular displacement between

Pot 1  and Pot 1

and between

Pot 1  and Pot 1

Point separation (mm) 250


Displacement offsets (mm)

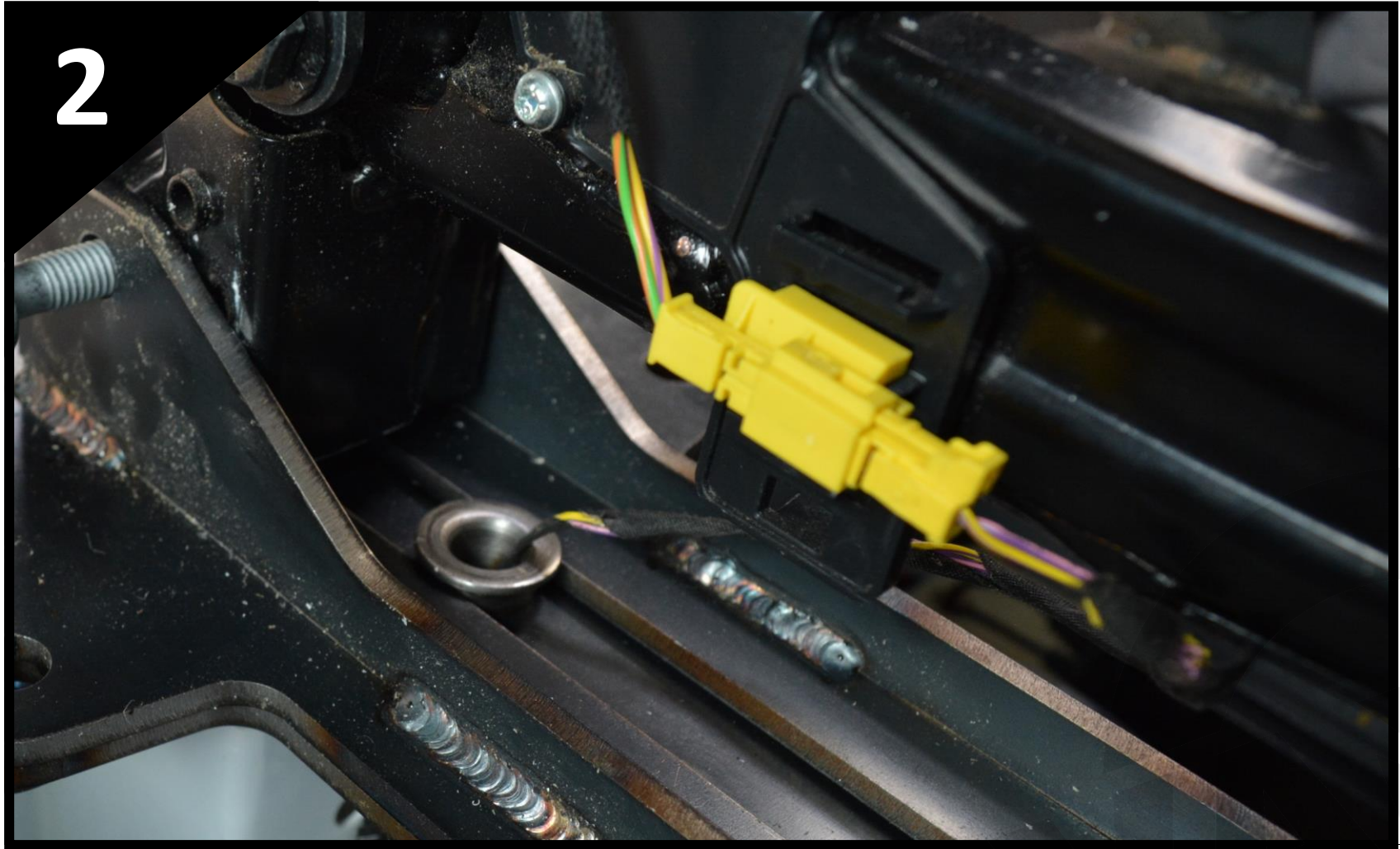
0
0
0
0
0
0

Shunt cal data

Load cell	Error %	Tolerance %	Pass/Fail

- VOSC Test Certification to confirm our double swivel seat base meets EEC Regulation 14.09 & Directive 76/115/EEC as Amended by 2005/41/EC Seat Belt Anchorage Test for use on the Mercedes Sprinter '18-.
- Please note – this part also fits the VW Crafter '06-'17 & Mercedes Sprinter '06-'18 model van, but has not been tested for use on these seats/seat bases, therefore the certification is not valid if used on these vans.

**INSTRUCTIONS**  
**DOUBLE SWIVEL SEAT BASE**



- Disconnect the van battery and wait 20 minutes, before disconnecting the Airbag sensor connector mounted on the central seat rail.

**INSTRUCTIONS**  
**DOUBLE SWIVEL SEAT BASE**



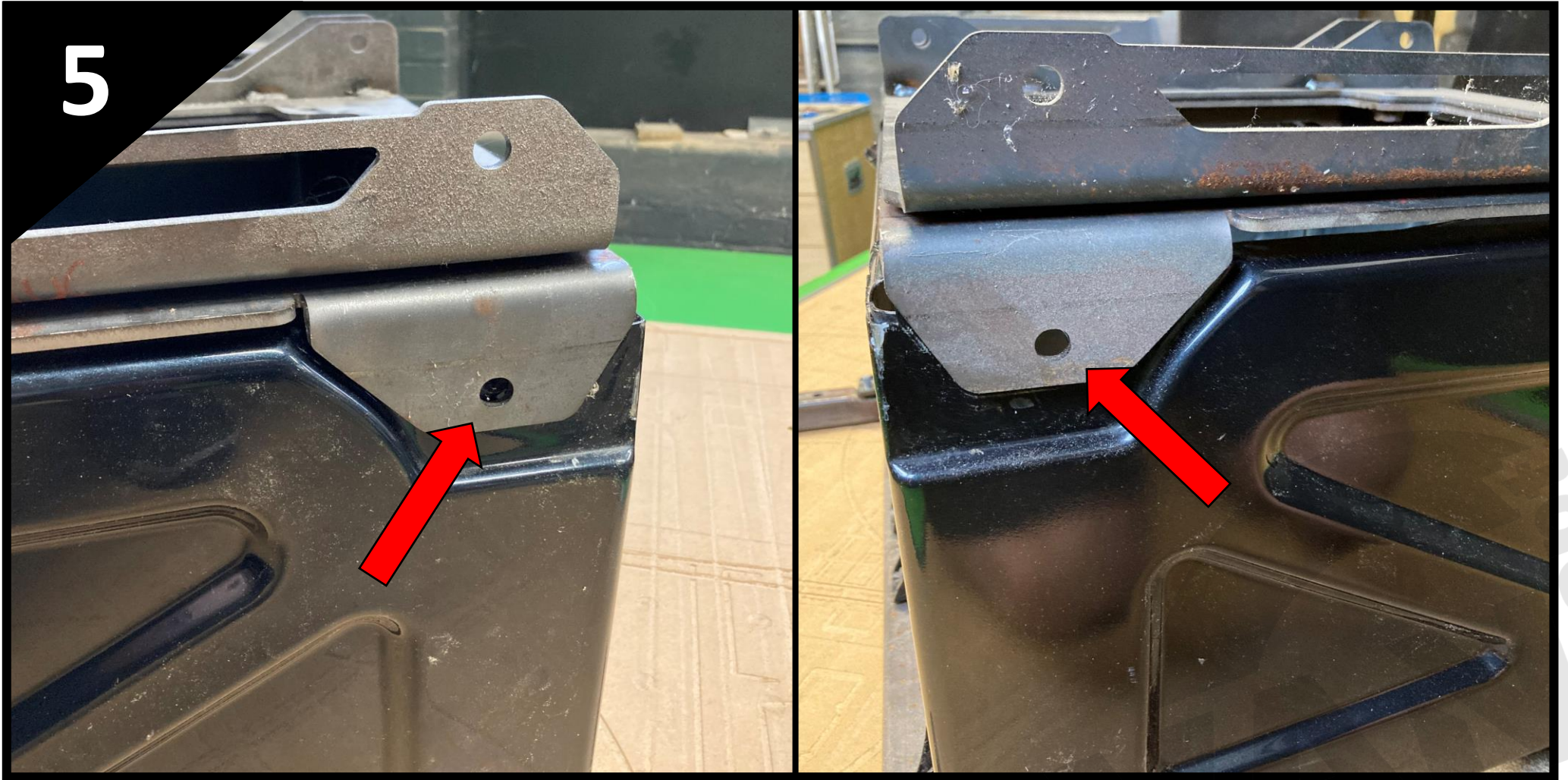
- Remove the four bolts that secure the seat to the seat base in the positions arrowed above.
  - Remove the seat from the van.

INSTRUCTIONS  
DOUBLE SWIVEL SEAT BASE



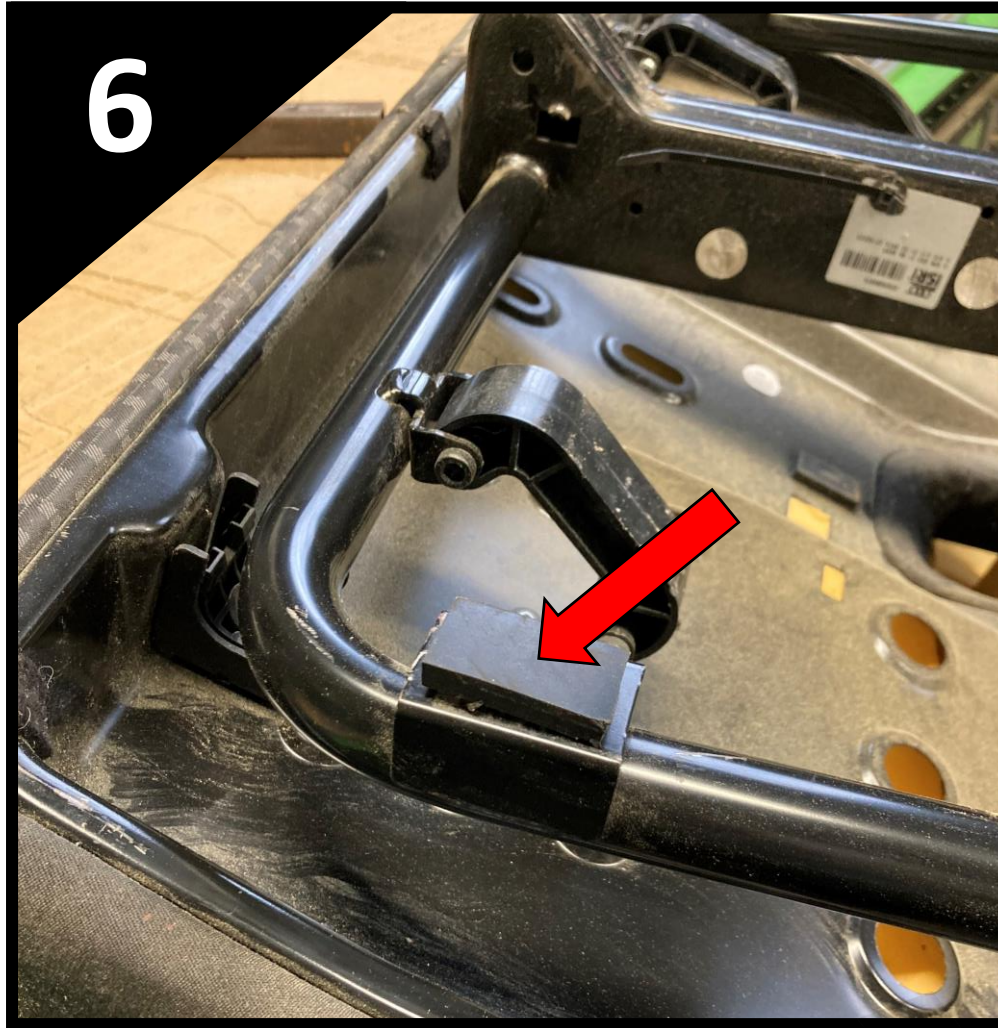
- Fit the swivel seat base in the same position that the seat was removed and re-fit the original bolts.
- *This can sometimes be a bit tight if the metal on the seat base has been distorted or compressed from previous fitment.*

INSTRUCTIONS  
DOUBLE SWIVEL SEAT BASE



- Fit the swivel seat base in the same position that the seat was removed and re-fit the original bolts.
- *This can sometimes be a bit tight if the metal on the seat base has been distorted or compressed from previous fitment.*

INSTRUCTIONS  
DOUBLE SWIVEL SEAT BASE



- If fitting to a VW Crafter '06-'17 & Mercedes Sprinter '06-'18 model van, apply the two self-adhesive rubber blocks to the flat area shown above on the underside of the seat frame.

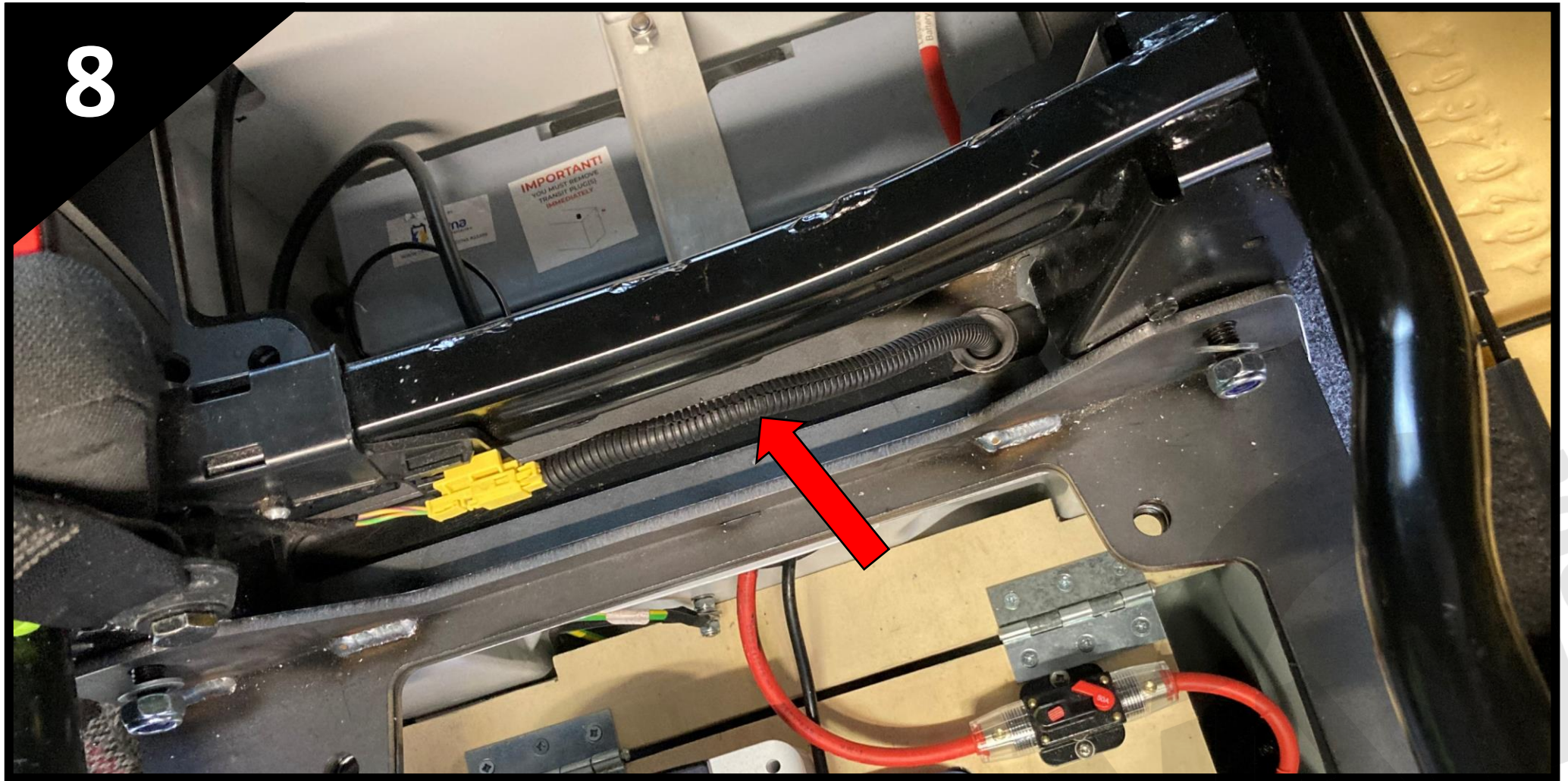


INSTRUCTIONS  
DOUBLE SWIVEL SEAT BASE



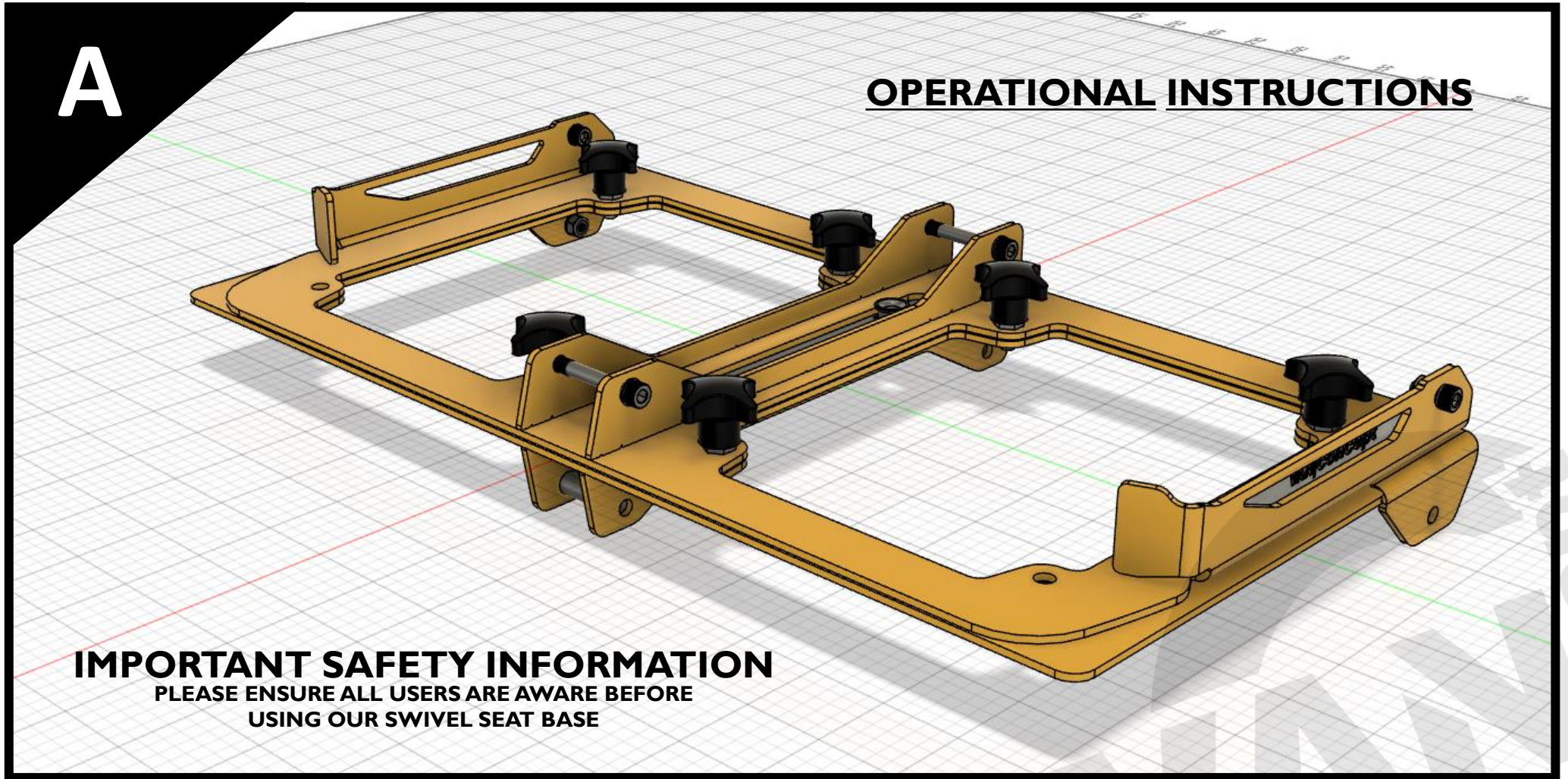
- Fit the seat to the swivel base and use the bolts provided to secure in place (*using the exploded diagram for guidance*).
  - Ensure all bolts are fully tightened with the nyloc nuts.

## INSTRUCTIONS DOUBLE SWIVEL SEAT BASE



- Fit the split convoluted tubing over the airbag sensor wiring and feed through the pivot hole on the swivel seat base.
  - Re-fit the connector to the connector on the seat frame.
- The airbag sensor wiring is held to the seat base with a couple of clips. Cut these clips off to un-restrict the wiring and give it some more length. *This is important* to allow the swivel seat to rotate fully without pulling out the connector.
  - Check the rotation of the seat base and the wiring prior to re-connecting the battery!

**INSTRUCTIONS  
DOUBLE SWIVEL SEAT BASE**



- When in the forward facing driving configuration, please ensure the six hand knobs are secured tightly and positioned in the six mounting holes as shown (not in the two outer front corners).
- Please ensure that when turning our swivel seat base, fingers remain clear from the two rotating parts.

INSTRUCTIONS  
DOUBLE SWIVEL SEAT BASE



- To operate, remove the six hand knobs, rotate the seat (and slide at the same time) to clear the B-pillar and drivers seat.
  - When positioned facing rearwards, re-fit the hand knobs to secure in place.