

INSTRUCTIONS BULKHEAD SURROUND

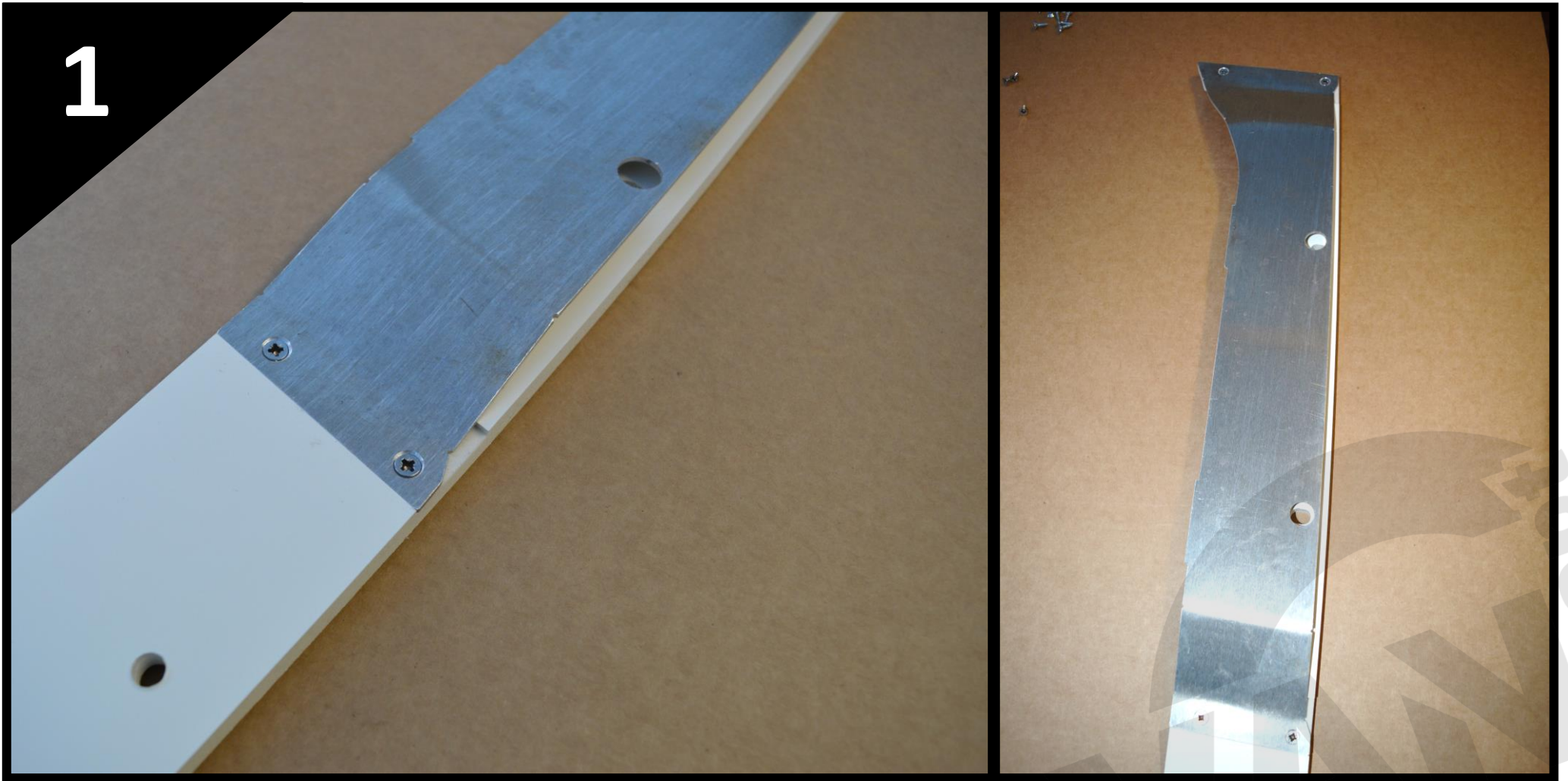
No.	Part No.	Description	Open Top & Open Base	Shelf Top & Open Base
1	K-0029	Crafter/MAN TGE Bulkhead Shelf Top	-	1
2	K-0030 LH	Crafter/MAN TGE Bulkhead Side LH	1	1
3	K-0030 RH	Crafter/MAN TGE Bulkhead Side RH	1	1
4	K-0031	Crafter/MAN TGE Bulkhead Open Top	1	-
5	P-0053	Crafter/MAN TGE Top Bulkhead Spacer	1	1
6	SMW-0127 LH	Crafter/MAN TGE Bulkhead Edge Lower LH	1	1
7	SMW-0127 RH	Crafter/MAN TGE Bulkhead Edge Lower rh	1	1
8	SMW-0128 LH	Crafter/MAN TGE Bulkhead Edge Upper LH	1	1
9	SMW-0128 RH	Crafter/MAN TGE Bulkhead Edge Upper RH	1	1
10	SMW-0129 LH	Crafter/MAN TGE Bulkhead Edge Stepped LH	1	1
11	SMW-0129 RH	Crafter/MAN TGE Bulkhead Edge Stepped RH	1	1
12	SMW-0131	Crafter/MAN TGE Open Top Bulkhead Edge	2	-
13	SMW-0118	Bulkhead Anti-Twist Plate	2	2
14	CSK Screw	4 x 16mm	5	5
15	CSK Screw	4 x 25mm	-	5
16	CSK Screw	3.5 x 9.5mm	8	8
17	CSK Screw	No.6 x 1/2"	34	22
18	Pan Screw	No.6 x 3/8"	4	4
19	Flanged Button Head Bolt	M6 x 25mm	12	12

What's in the box?

The various kit options and their parts are noted in the table with a diagram on the following page.

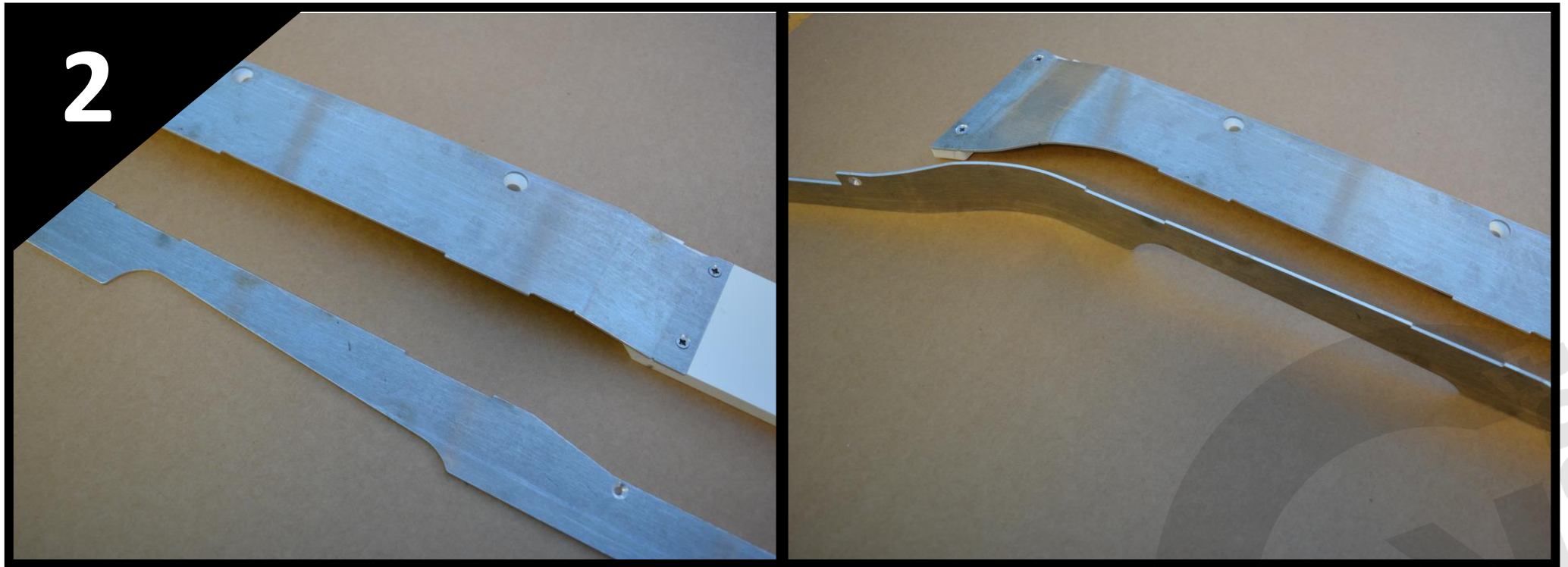
Items/Fasteners in blue are pre-fitted on Full Kits.

INSTRUCTIONS BULKHEAD SURROUND



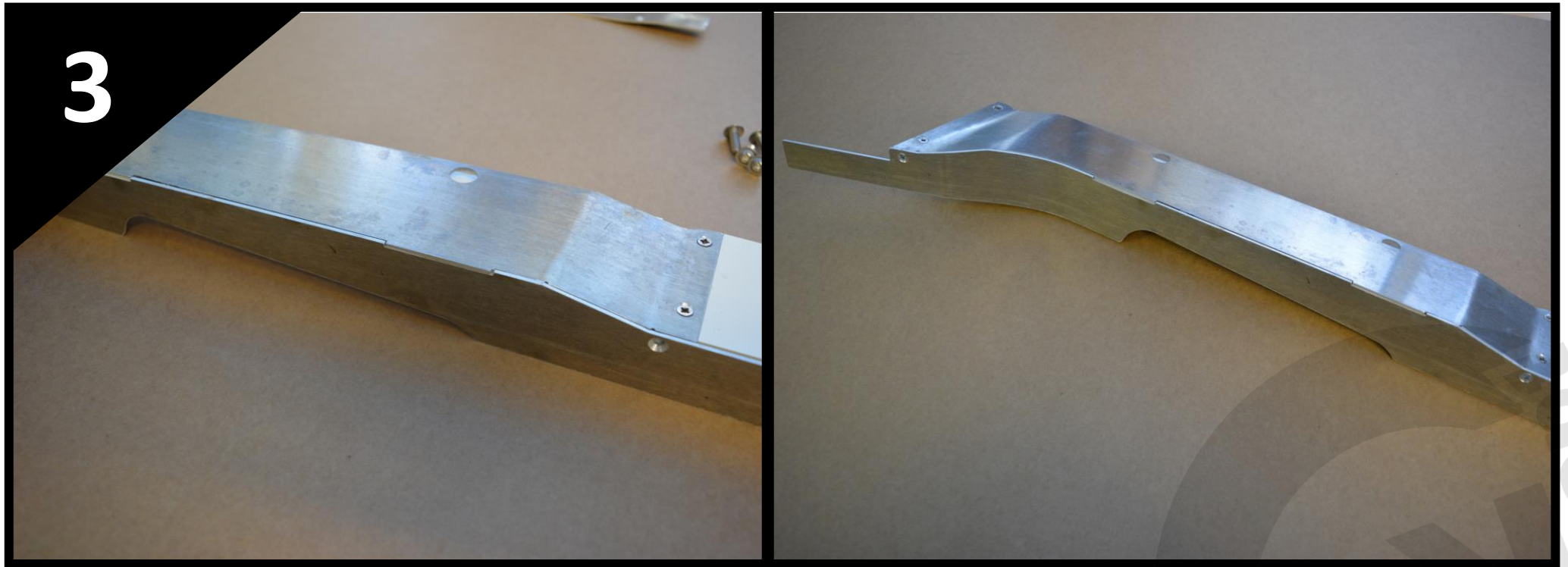
- Attach the stepped aluminium sections to the side profiles, using the 3.5 x 9.5mm CSK screws. The metalwork should sit neatly into the machined recesses.

INSTRUCTIONS BULKHEAD SURROUND



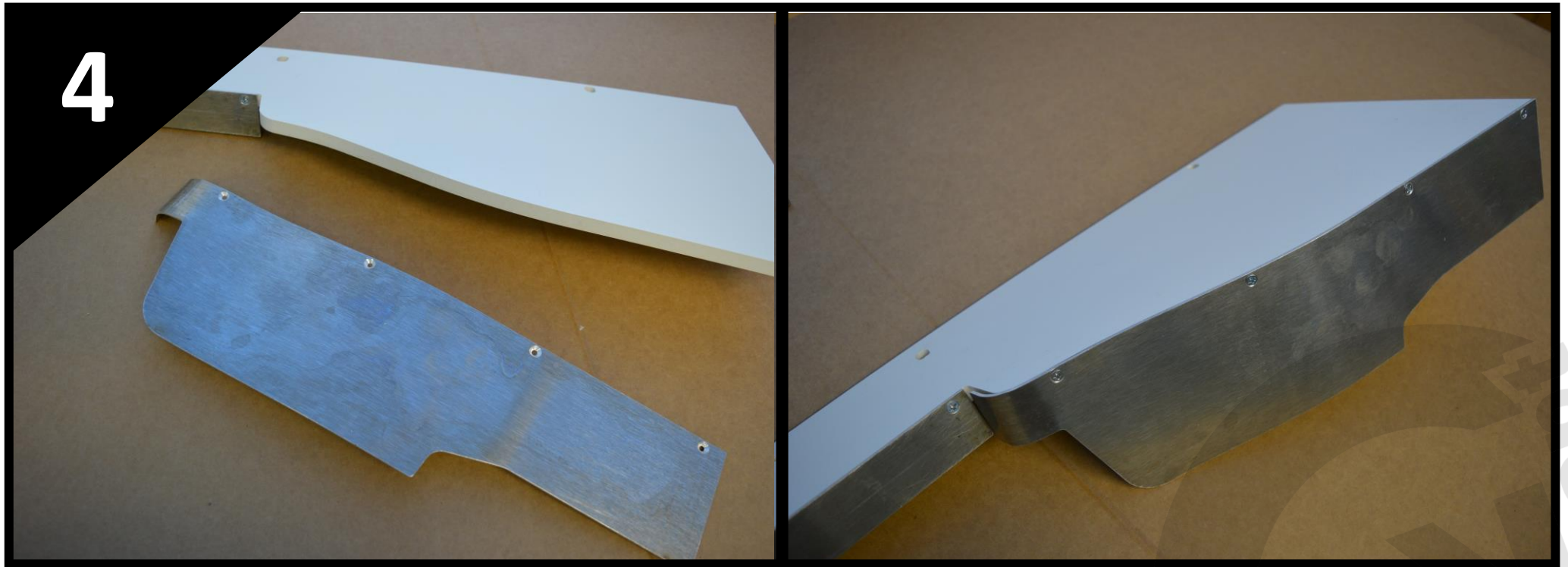
- Offer the bulkhead edge upper aluminium sections to the assembly and form the top area into the correct profile, using the two interlocking notches to locate. *The aluminium is soft and can easily be manipulated using your thumb/hands.*
 - *Ensure the countersunk holes are outward facing.*

INSTRUCTIONS BULKHEAD SURROUND



- Use the No.6 x 1/2" CSK screws to attach the aluminium edge in place along the length of the PVC construction board.

INSTRUCTIONS BULKHEAD SURROUND



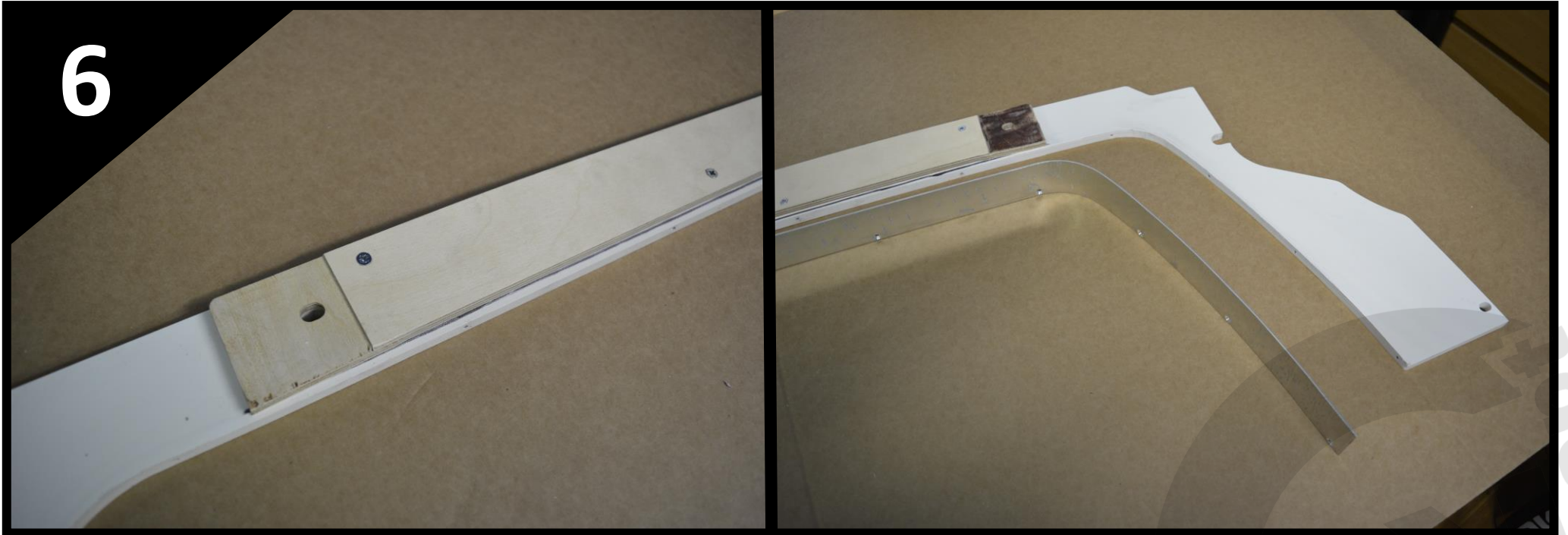
- Offer the bulkhead edge lower aluminium sections to the assembly and form the piece into the correct profile, using the bottom edge to align. *The aluminium is soft and can easily be manipulated using your thumb/hands.*
 - *Ensure the countersunk holes are outward facing and use the No.6 x 1/2" CSK screws to attach.*

INSTRUCTIONS BULKHEAD SURROUND



- If not already fitted, drill and countersink five $\text{Ø}3\text{mm}$ pilot holes equally spaced in the bulkhead top spacer and secure to the bulkhead shelf top using the 5x 4x16mm CSK screws.
- *Note the orientation of the bulkhead top, with the larger cut-out in the top corner to go around the sliding door mechanism. Screw in from the reverse side, as shown.*

INSTRUCTIONS BULKHEAD SURROUND



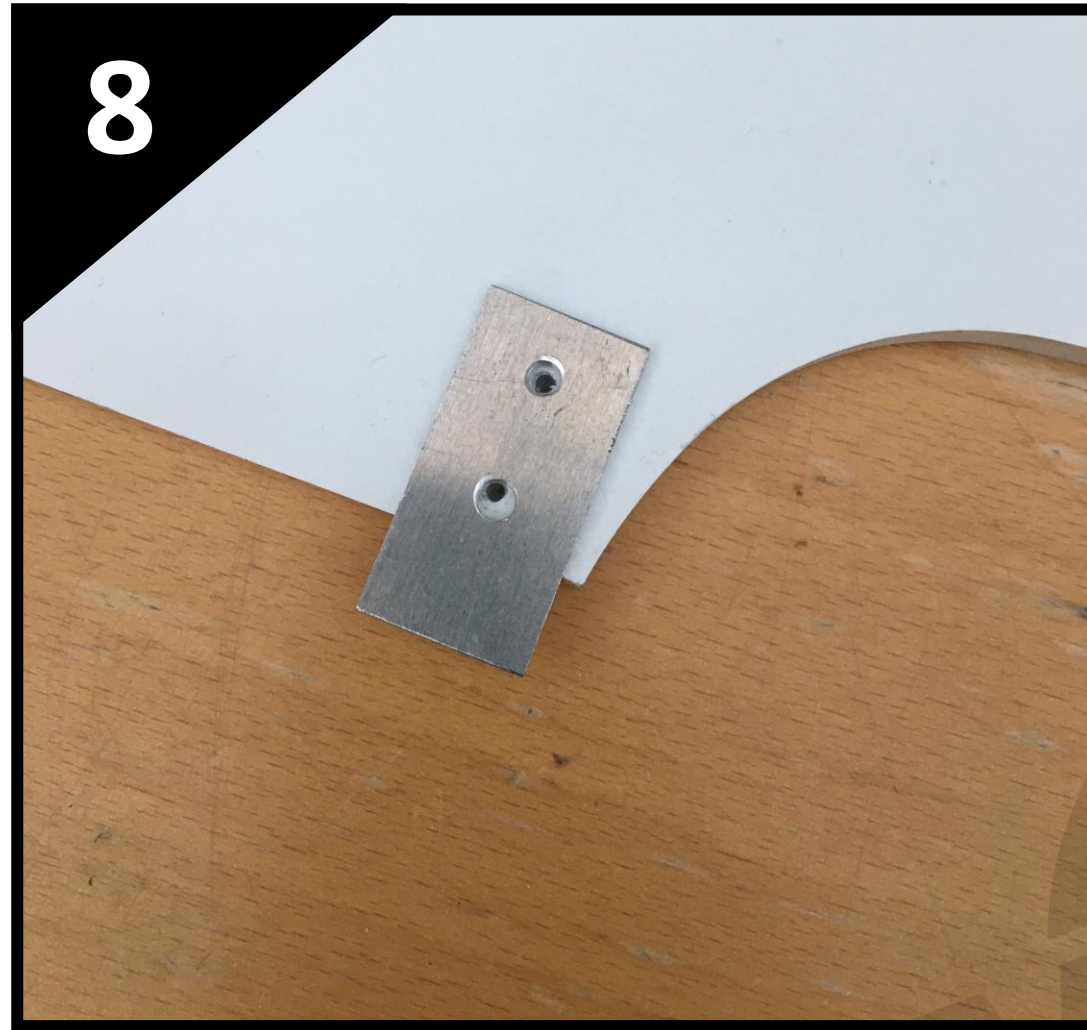
- If not already fitted, drill and countersink five $\text{Ø}3\text{mm}$ pilot holes equally spaced in the bulkhead top spacer and secure to the bulkhead open top using the 5x 4x16mm CSK screws.
- *Note the orientation of the bulkhead top, with the larger cut-out in the top corner to go around the sliding door mechanism. Screw in from the reverse side, as shown.*
- Offer the bulkhead open top edge aluminium sections to the assembly and form the piece into the correct profile, using the bottom edge to align.
- *Ensure the countersunk holes are outward facing and use the No.6 x $\frac{1}{2}$ " CSK screws to attach.*

INSTRUCTIONS BULKHEAD SURROUND



- The open top with bulkhead top spacer and aluminium edges fitted.
- Note the optional wiring cut-out. This is part machined into the material and depending on your wiring/conversion, can either be carpeted over to hide or fully cut-out to allow the OEM wiring to pass through.

INSTRUCTIONS BULKHEAD SURROUND



- On the top surround, fit the 2x Anti-Twist aluminium plates provided using the 4x No.6 x 3/8 pan head screws into the reverse side of the plastic board (*the reverse side can be identified by the side with the wooden spacer screwed to it*). *The position isn't too critical, but make sure they are at least 4mm away from the corner as shown.*
 - These plates are used to help align and prevent twisting of the sides when bolted up.

INSTRUCTIONS BULKHEAD SURROUND



- If lining the bulkhead surrounds, now is the time to do it.
- We suggest to wrap the lining material around the edge of the PVC construction board and aluminium edge, but to not cover the rear, to allow the PVC construction board to bolt up against the van body.

INSTRUCTIONS BULKHEAD SURROUND



- The side profiles fully lined.
- The side profiles are designed to fit to a floor height approx. 21mm above the top of the OEM floor ribs on the FWD van. If fitting to a RWD, 4x4 model or you have a different height floor lever, the bottom edge of the surrounds will need to be trimmed to suit. Both materials can be easily trimmed using a hacksaw.

INSTRUCTIONS BULKHEAD SURROUND



- If fitting the bulkhead shelf top with our Cab Headliner Shelf fitted, remove the M6 button head bolt on the left sided bracket, as shown.

INSTRUCTIONS BULKHEAD SURROUND

12



- Offer either top piece into place and fit the 4x M6x25mm flanged head bolts through the slots in the sides and top and bolt into the threaded holes in the metalwork.

INSTRUCTIONS BULKHEAD SURROUND

13



- The metal plate protruding down on the reverse side of the top piece.

INSTRUCTIONS BULKHEAD SURROUND

14



- Fit the sides in place using the remaining M6 x 25mm flanged head bolts.
- Once loosely fitted and adjusted, tighten all the bolts to secure in place.

15



- If fitting the kit with our cab headliner shelf, equally space and screw the 5x 4x25mm CSK screws supplied with the shelf kit through the strengthening rib on the back edge of the shelf and into the reverse side of the bulkhead surround, to secure the two pieces together.

INSTRUCTIONS BULKHEAD SURROUND



- With the open top fitted with the OEM head lining, the aluminium profile should neatly align with the edge.